

# Op. 6 VIII. Concerto Grosso

Per la notte di Natale

ARCANGELO CORELLI  
arr. I. Bailey-Mortimer

Violin 1

1.

Vivace



Grave



2.

## Allegro

*f*

8 *mf* *f* *mf*

15 *f*

22 *f*

28

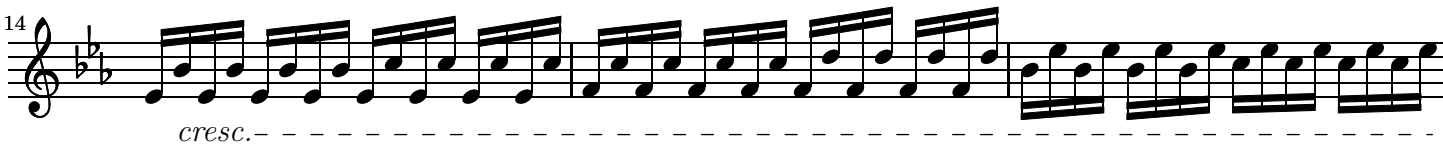
35 *p* *f* allarg.

3.

## Adagio



## Allegro



## Adagio



29

allarg.

a tempo

dim. e allarg.

*p*

4.

*Vivace*

*p* *f*

8 *mf* *f*

19 *p* *poco allarg.*

5.

*Allegro*

*f*

6 *p* *f*

12 *p* *f*

17 *p*

*p* *f* *p* *f*

31 *p* *f* *p* *f* *p*

37 *cresc.* *f* *p* *cresc.*

42 *f* *p* *cresc.* *f* *f*

48 *p* *f* *p* scherzoso

55 *f*

62 *p* 1. 2.

6. PASTORALE

Largo

*p*

4 *f* *p* *affettuoso*

9 *f* *p*

13 *mf* *f* *p*

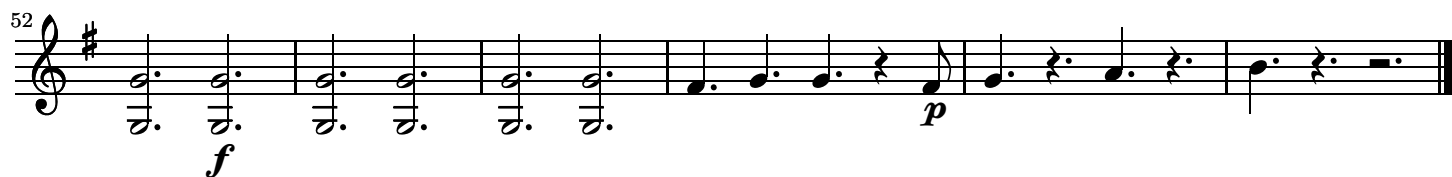
18 *f* *mf* *p*

23 *f* *p* *f* *mf* *poco largamente* *a tempo*

28 *cresc.* *p*

33 *p*

38 *f*





# Op. 6 VIII. Concerto Grosso

## Per la notte di Natale

ARCANGELO CORELLI  
arr. I. Bailey-Mortimer

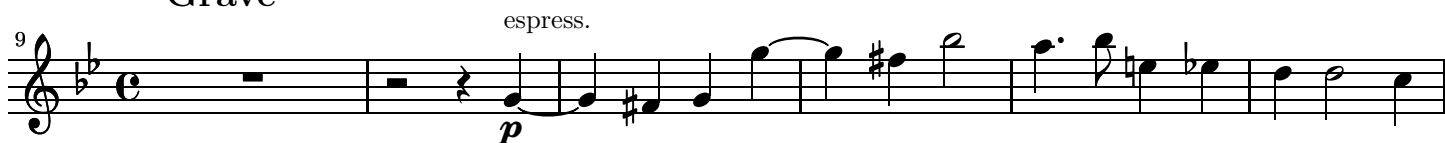
Violin 2

1.

Vivace

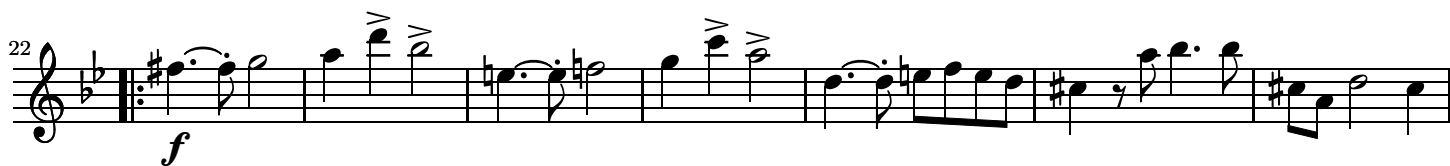
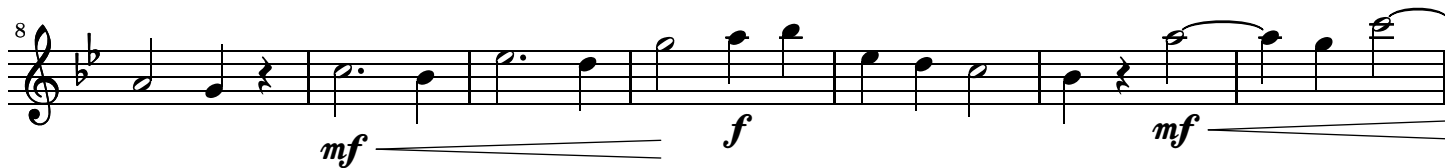
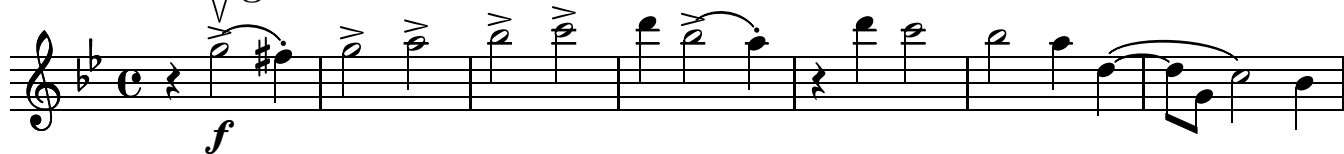


Grave



2.

Allegro



29

36

allarg.

*p* *f*

3. Adagio

Allegro

5

allarg.

*p*

10

*cresc.*

15

*p*

Adagio

20

*f* *mf*

25

29 *allarg.* *a tempo* *dim. e allarg.*

4.

## Vivace

10

20 *poco allarg.*

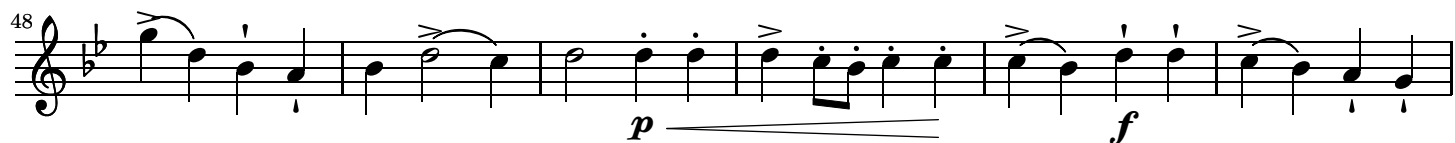
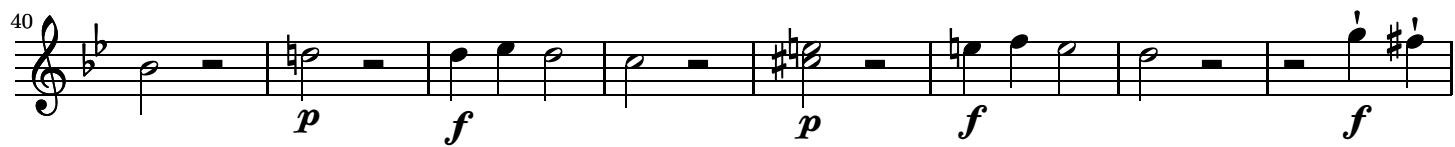
5.

## Allegro

7

14

21



## 6. PASTORALE

## Largo



13 *mf* *f* *p*

17 *f* *mf*

21 *p* *f* poco largamente

25 *p* *f* *mf* *cresc.* *p* a tempo

30

35 *p*

39 *f*

43 *p* *f* *p*

48 *f*



# Op. 6 VIII. Concerto Grosso

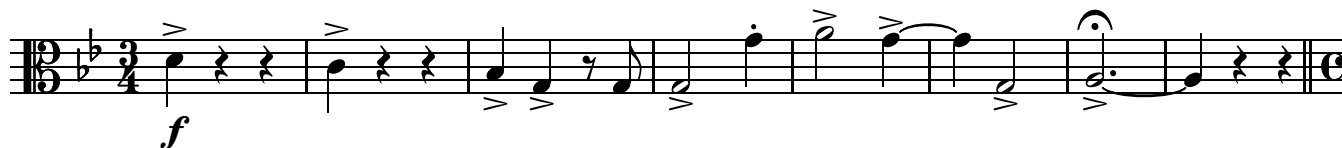
## Per la notte di Natale

ARCANGELO CORELLI  
arr. I. Bailey-Mortimer

Viola

1.

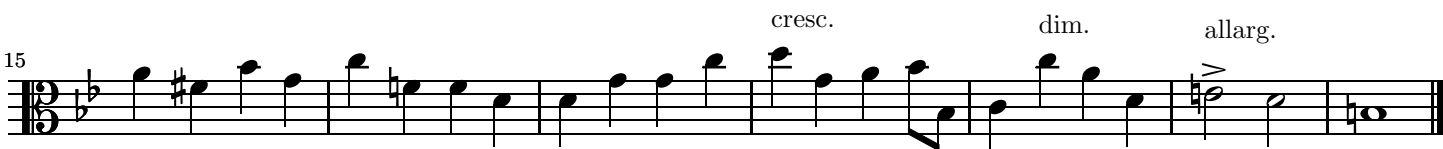
Vivace



Grave



15



2.

Allegro



7



15



22



30

37

*p* *f* *allarg.*

3. Adagio

*p* *mf* *espress.* *p*

Allegro

5

*p* *allarg.* *p*

11

*cresc.*

16

*p* *f*

Adagio

22

*p* *mf* *espress.* *p*

27

*p* *allarg.* *a tempo* *allarg.* *mf* *p*



4.

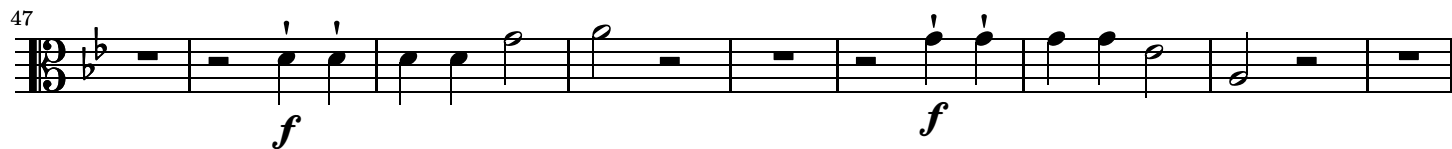
## Vivace

Musical score for exercise 4, titled "Vivace". The score is written in bass clef with a key signature of one flat (B-flat) and a time signature of 3/4. It consists of three staves of music. The first staff (measures 4-10) begins with a whole rest, followed by a half note G2, a dotted half note G2, and a half note G2, all marked with a forte (*f*) dynamic and an accent (>). A repeat sign follows. The second staff (measures 11-19) starts with a half note G2, a dotted half note G2, and a half note G2, all marked with a forte (*f*) dynamic and an accent (>). This is followed by a half note G2, a dotted half note G2, and a half note G2, all marked with a mezzo-forte (*mf*) dynamic. The third staff (measures 20-26) begins with a half note G2, a dotted half note G2, and a half note G2, all marked with a forte (*f*) dynamic. This is followed by a half note G2, a dotted half note G2, and a half note G2, all marked with a piano (*p*) dynamic. The piece concludes with a repeat sign and the instruction "poco allarg." above the final measure.

5.

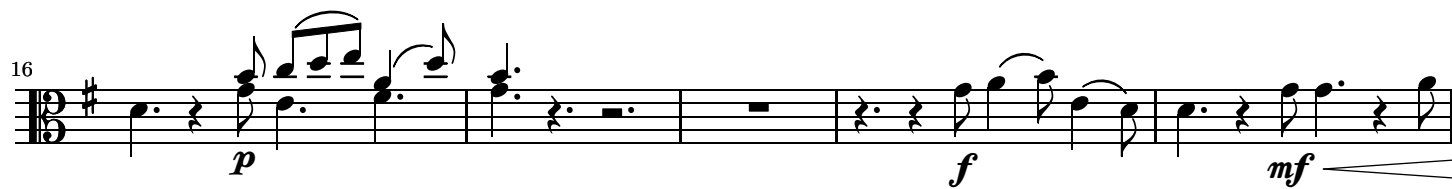
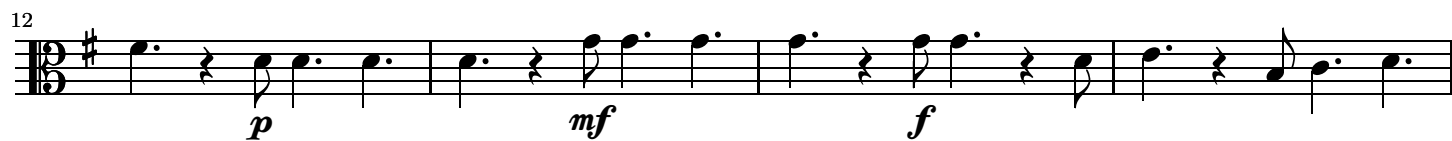
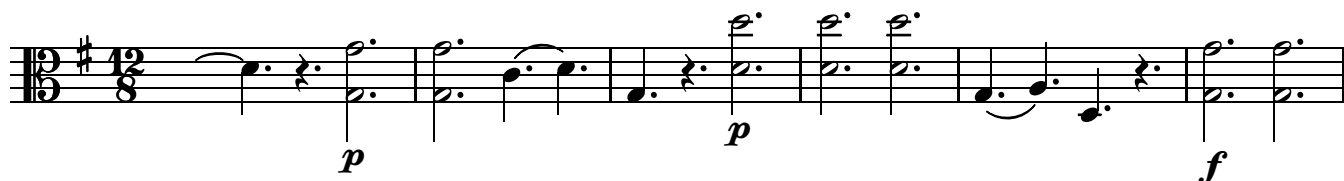
## Allegro

Musical score for exercise 5, titled "Allegro". The score is written in bass clef with a key signature of one flat (B-flat) and a time signature of 3/4. It consists of five staves of music. The first staff (measures 4-7) begins with a whole rest, followed by a half note G2, a dotted half note G2, and a half note G2, all marked with a forte (*f*) dynamic. The second staff (measures 8-15) starts with a half note G2, a dotted half note G2, and a half note G2, all marked with a forte (*f*) dynamic. This is followed by a half note G2, a dotted half note G2, and a half note G2, all marked with a mezzo-piano (*mp*) dynamic. The third staff (measures 16-22) begins with a half note G2, a dotted half note G2, and a half note G2, all marked with a forte (*f*) dynamic. This is followed by a half note G2, a dotted half note G2, and a half note G2, all marked with a piano (*p*) dynamic. The fourth staff (measures 23-30) starts with a half note G2, a dotted half note G2, and a half note G2, all marked with a forte (*f*) dynamic. This is followed by a half note G2, a dotted half note G2, and a half note G2, all marked with a forte (*f*) dynamic. The fifth staff (measures 31-37) begins with a half note G2, a dotted half note G2, and a half note G2, all marked with a forte (*f*) dynamic. This is followed by a half note G2, a dotted half note G2, and a half note G2, all marked with a forte (*f*) dynamic. The piece concludes with a half note G2, a dotted half note G2, and a half note G2, all marked with a piano (*p*) dynamic.



## 6. PASTORALE

## Largo



21 *poco largamente*

26 *a tempo*

30

36

43

48

53

# Op. 6 VIII. Concerto Grosso

## Per la notte di Natale

ARCANGELO CORELLI  
arr. I. Bailey-Mortimer

Cello

1.

Vivace

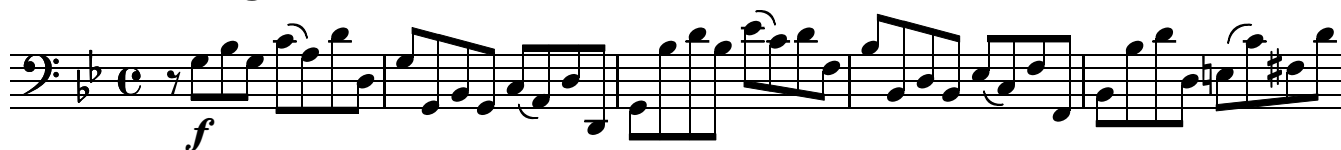


Grave  
espress.



2.

Allegro



22 *f*

27

32 *p*

37 *f* allarg.

3. Adagio

*p* *mf* *espress.*

6 *f* allarg. *p* Allegro

10 *cresc.*

15 *p*

## Adagio

20 *f* *p* *mf* *espress*

27 *f* *allarg.* *a tempo* *allarg.* *p* *mf*

4.

## Vivace

*p* *f* *mf* *f* *mf* *f*

10 *f* *mf* *f* *mf* *f*

19 *p* *poco allarg.*

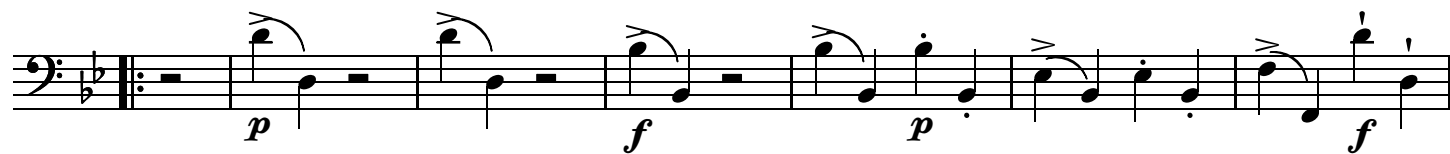
5.

## Allegro

*f*

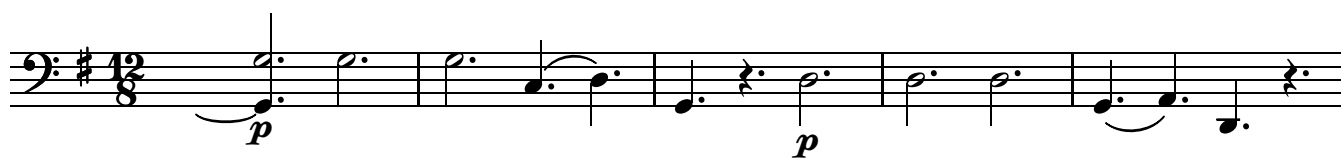
8 *p* *f* *p*

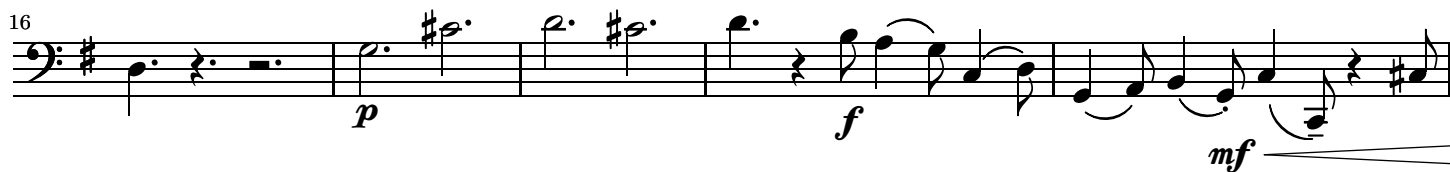
14 *f*



## 6. PASTORALE

Largo







54

*p*